

# MONTHLY MEMBERSHIP PROGRESS REPORT

LOCATION NORTH CAROLINA

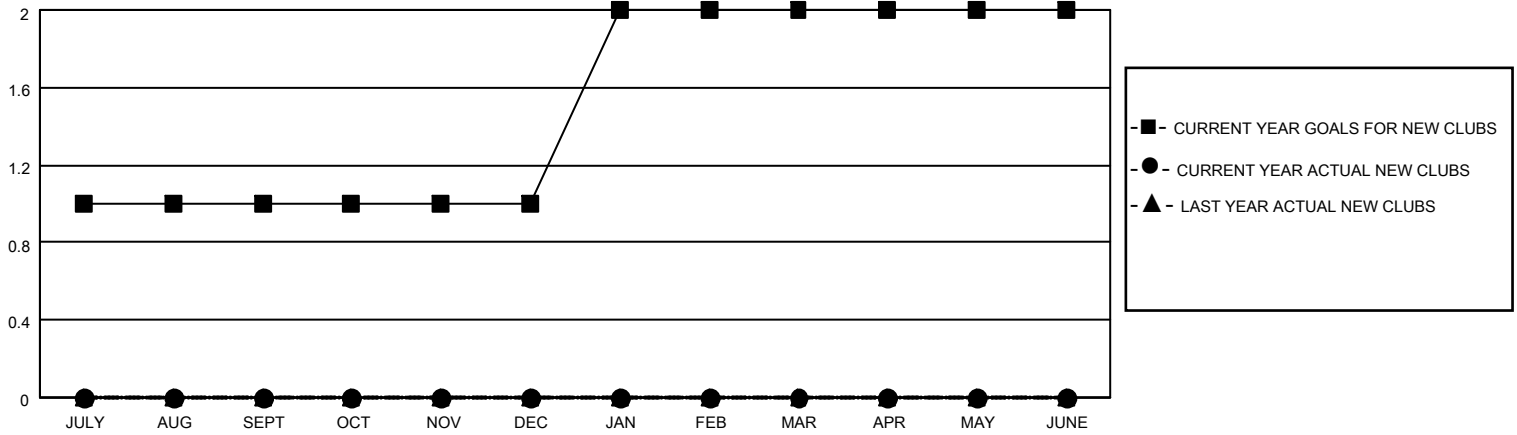
District 31 O

Results as of: 6/30/2023

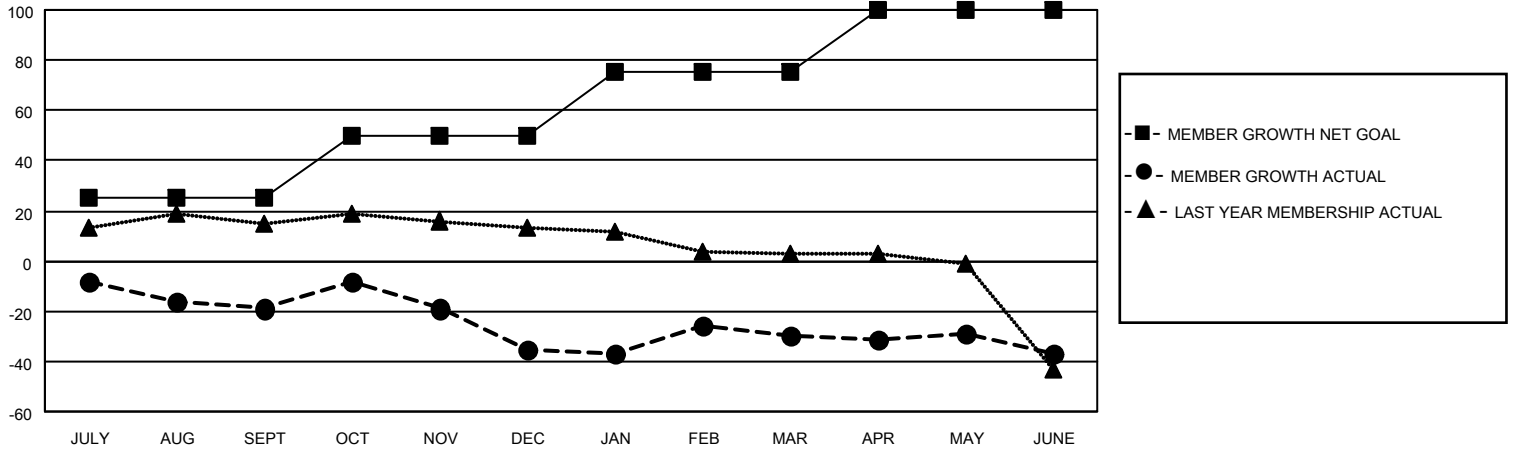
Clubs			
RESULTS FOR 2022-2023			
QUARTER	NEW CLUB GOAL	NEW CLUBS	DROPPED CLUBS
JULY/AUG/SEPT	1	0	0
OCT/NOV/DEC	0	0	0
JAN/FEB/MAR	1	0	0
APR/MAY/JUNE	0	0	0

Members			
RESULTS FOR 2022-2023			
QUARTER	MEMBER GROWTH NET GOAL	MEMBER GROWTH ACTUAL	DROPPED MEMBERS ACTUAL (including transfers)
JULY/AUG/SEPT	25	22	40
OCT/NOV/DEC	25	35	51
JAN/FEB/MAR	25	36	28
APR/MAY/JUNE	25	31	35

**GOALS AND ACTUAL NEW CLUBS CUMULATIVE**



**GOALS AND ACTUAL MEMBERS CUMULATIVE**



**DROPPED CLUBS: 0**

**29 CLUBS OF 52 ADDED 1 OR MORE NEW MEMBERS**

**GENDER DISTRIBUTION**

MALE	681 (65.23%)
FEMALE	363 (34.77%)
NON BINARY	0 (0.00%)
PREFER NOT TO ANSWER	0 (0.00%)

**DROPPED MEMBERS**

[CLICK HERE FOR CUMULATIVE MEMBERSHIP DATA](#)

DECEASED	14
CLUB CANCELLED	0
OTHER	140
<b>TOTAL</b>	<b>154</b>

TOTAL FAMILY UNIT MEMBERS 255

FAMILY MEMBERS PAYING HALF DUES 129